

ROYAL ASTRONOMICAL SOCIETY OF NEW ZEALAND

VARIABLE STAR SECTION

CIRCULAR No. 132

A POSSIBLE FLARE STAR

Y760 Cen

This morning (May 16) two photos, exposed in the region of R Centauri, were received from Mr B. Ward of Tirau, N.Z. These were taken on 1968 April 28 at 20h30m and 20h50m NZST. Exposures were respectively one and three minutes. The limiting photographic magnitude of the negative is approximately 12.

On the first exposure there is a star of ptg mag 8.1, which does not appear nearly as bright on the second exposure, on which it is at the limit of visibility.

The position is :-

1950	R.A. 14h08.9m	S. 59° 12'
1900	14 05.4	S. 58 57.6
1875	14 03.6	S. 58 50.4

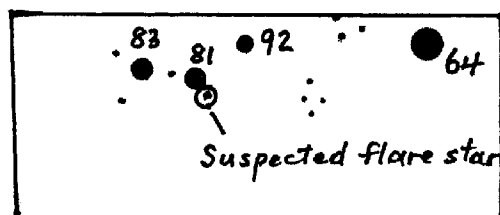
The position appears to correspond with a star of about ptg mag 13 on the Franklin-Adams chart and also on Vehrenberg's Stern-Atlas III, chart 398. The telescopic chart at the foot of this Circular is from portion of the chart for R Centauri, distributed with Series 1 of Charts for Southern Variables. The magnitudes shown are visual, and the marked ones are :- "64" = HD 123335 "81" = HD 123995 "83" = HD 124152 "92" = HD 123840

Because of the increase of 4 magnitudes within 20 minutes the object is a possible flare star rather than a star of U Gem type. Observers should keep a close watch on this star and make observations nightly, reporting any flare activity by telegram.

1968 May 16

Frank M. Bateson
Director
PO Box 33
Lake Tekapo
NEW ZEALAND

TELESCOPIC CHART OF IMMEDIATE VICINITY OF SUSPECTED FLARE STAR.



Reproduced Aug. 28, 2004. MM, Ed.