

U SCO

AAVSO A chart – 15°x15°

U Sco

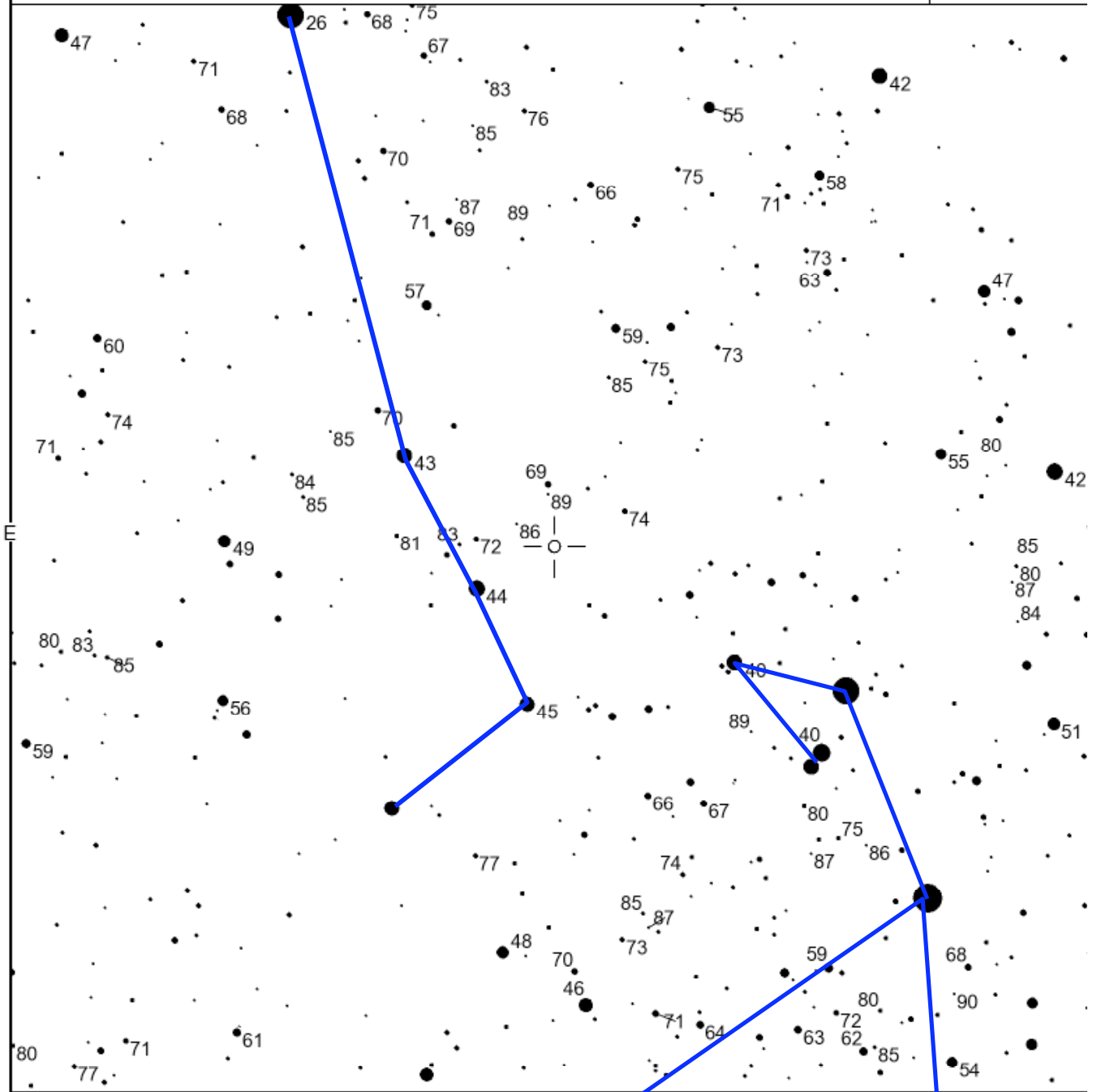
Magn: 8.7 - 19.3 V
Period:
Type: NR
Spec: pec(e)

U Sco

(2000) 16:22:30.80 -17:52:43.0

AAVSO Chart

080423



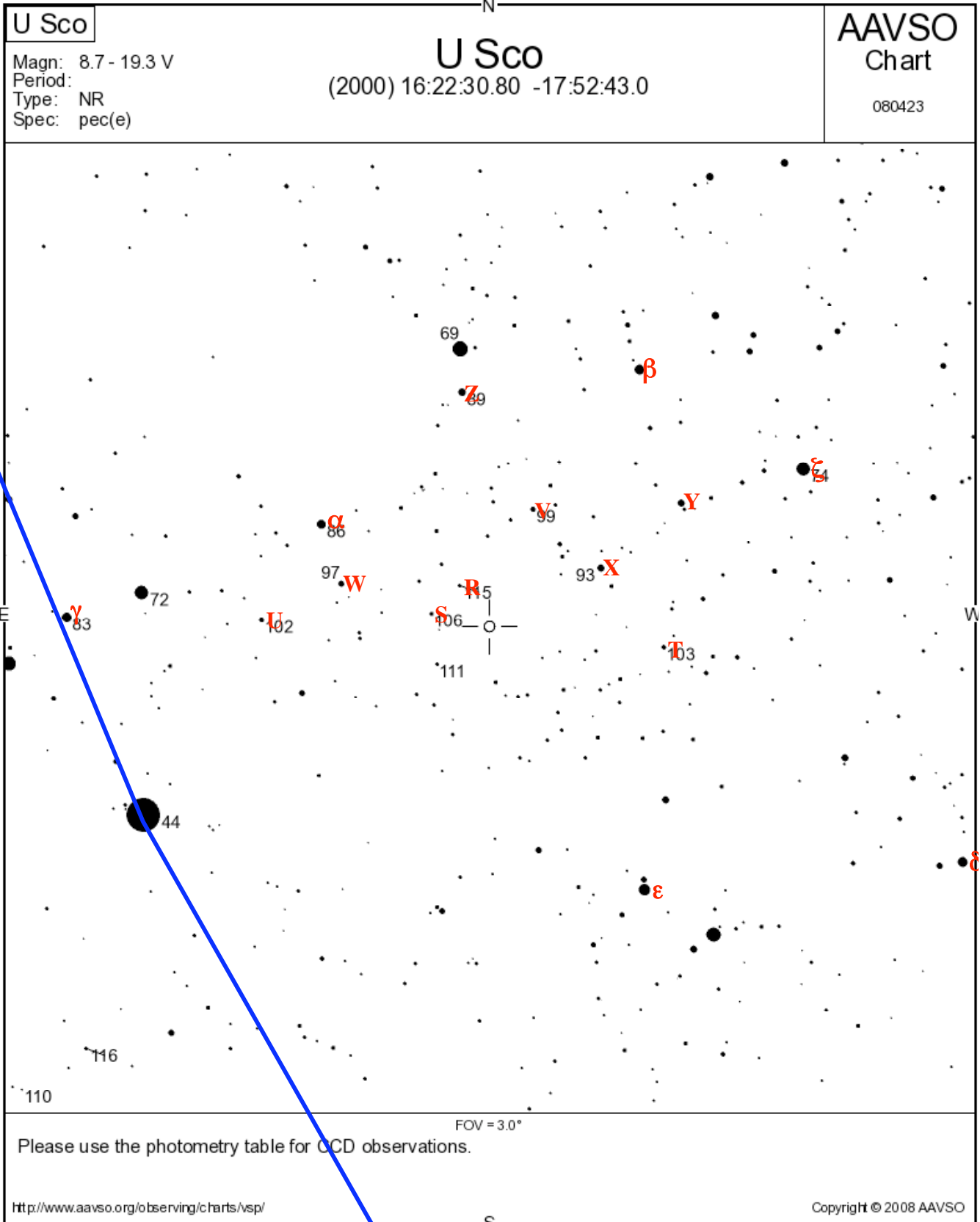
Please use the photometry table for CCD observations.

<http://www.aavso.org/observing/charts/vsp/>

Copyright © 2008 AAVSO

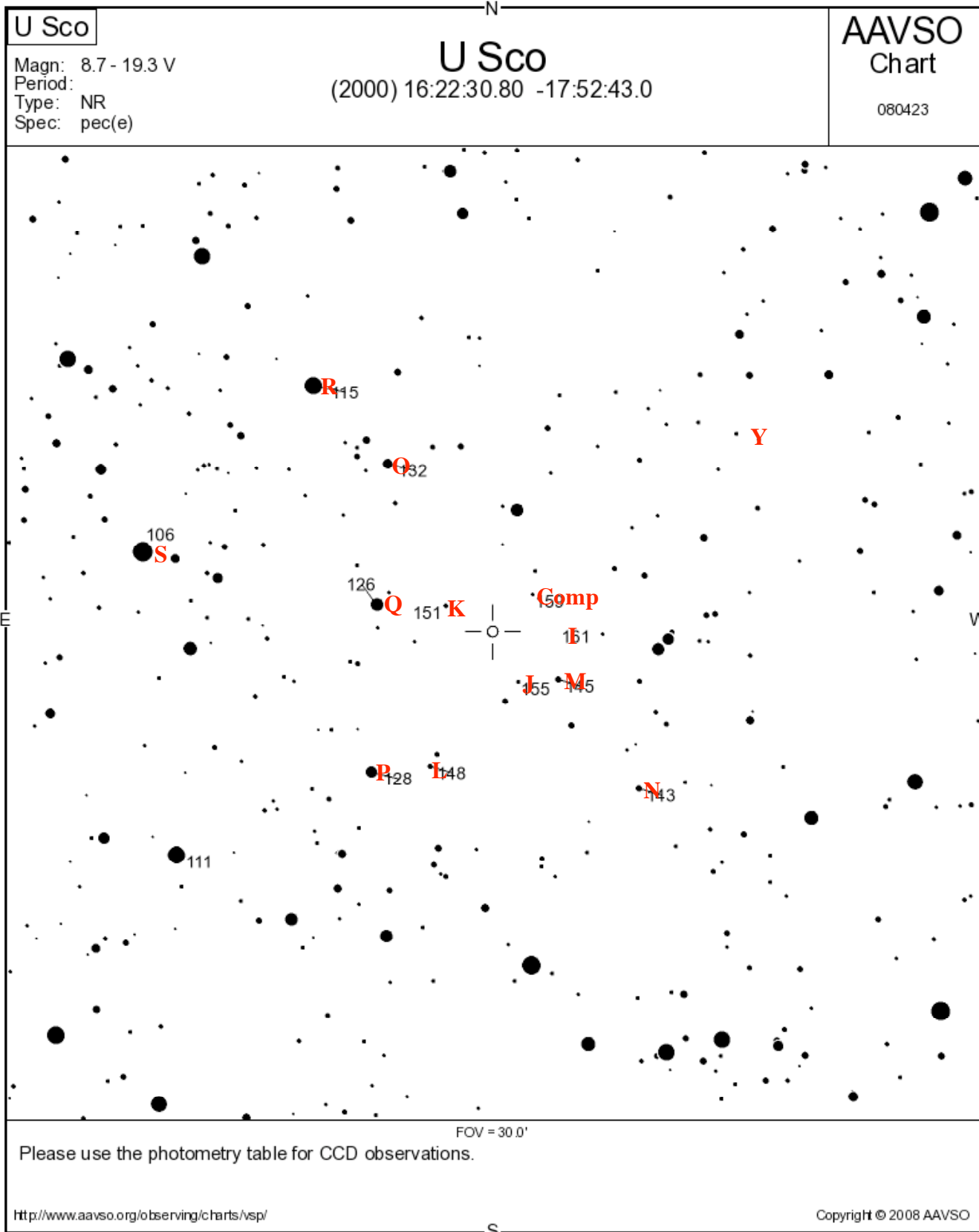
U SCO

AAVSO B chart – 3°x3°



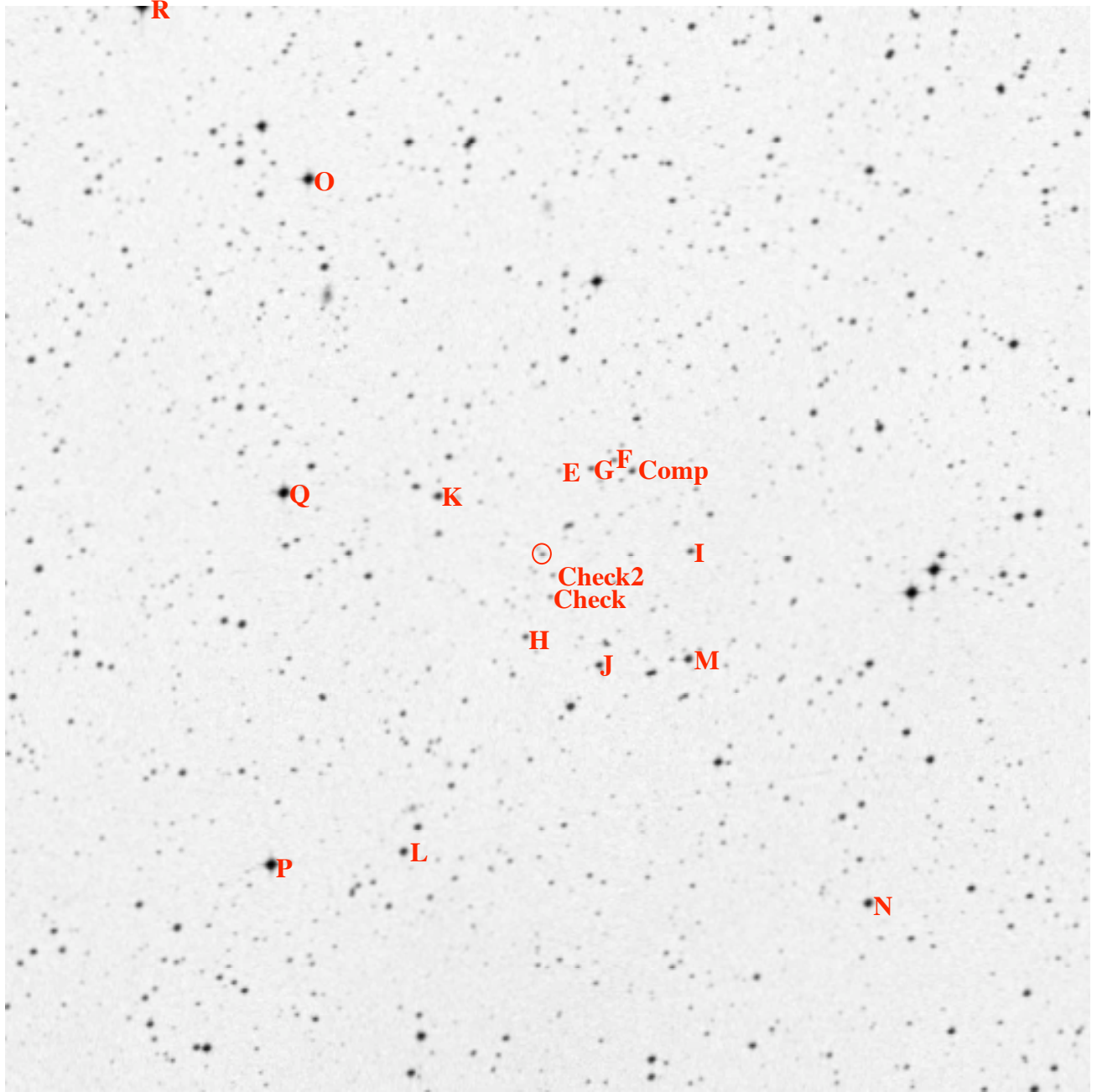
U SCO

AAVSO E chart – 30'x30'



U SCO

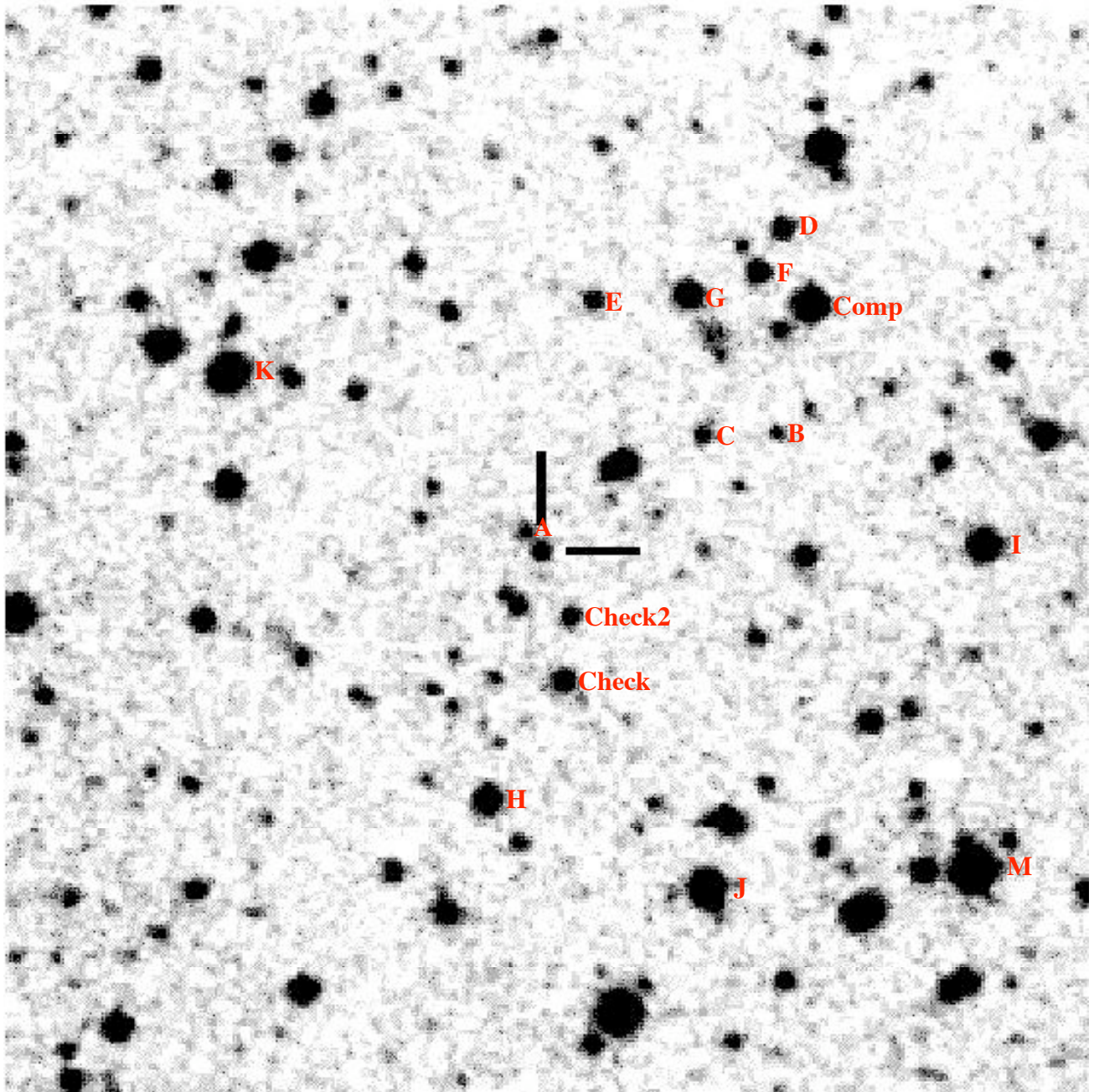
DSS - 15'x15'



U SCO

ERUPTIONS: 1863, 1906, 1917, 1936, 1945, 1969, 1979, 1987, 1999
J2000: 16:22:30.80 -17:52:44.0
 m_{\max} : 8.8
 m_{\min} : 19.5
 t_3 : 5 days (i.e., very fast)
Other: $P_{\text{orb}}=1.23$ days, G3 IV companion

CV Cat - 5'x5'



U SCO COMPARISON STARS

FINAL

STAR	Position	Catalog	AAVSO	JD	B	V	R	I	J	H	K	MagRef
U Sco	16:22:30.8 -17:52:43	U Sco		2453603.512	18.44	17.98	17.63	17.17				This paper
U Sco	16:22:25.6 -17:51:34	U Sco		2453799.824	18.09	17.64	17.33	16.91	16.8	16.4	>15.2	This paper
Comp	16:22:30.3 -17:53:19		159		16.96	15.87	15.25	14.59	13.54	12.94	12.76	This paper
Check	16:22:30.2 -17:53:01				18.60	17.53	16.94	16.35	15.62	14.99	14.8	This paper
Check2	16:22:30.2 -17:53:01				19.09	18.43	18.07	17.58	16.9	16.6	>15.9	This paper
A	16:22:31.1 -17:52:38 D				20.12	19.26						This paper
B	16:22:26.3 -17:52:11 C				20.03	19.24						This paper
C	16:22:27.6 -17:52:12 E				19.85	19.04						This paper
D	16:22:26.2 -17:51:13 F				19.53	18.39						This paper
E	16:22:29.8 -17:51:34 G				19.12	18.33						This paper
F	16:22:26.6 -17:51:25 H				18.36	17.43						This paper
G	16:22:27.9 -17:51:32 I				17.75	16.91						This paper
H	16:22:33.3 -17:12:43 J				17.36	16.58						This paper
I	16:22:22.2 -17:52:40		161		16.90	16.09						AAVSO
J	16:22:27.5 -17:54:16		155		16.31	15.49						AAVSO
K	16:22:36.9 -17:51:55		151		15.94	15.10						AAVSO
L	16:22:38.9 -17:56:51		148		15.72	14.75						AAVSO
M	16:22:22.3 -17:54:10		145		15.66	14.49						AAVSO
N	16:22:11.9 -17:57:33		143		15.16	14.29						AAVSO
O	16:22:44.4 -17:47:33		132		13.81	13.17						AAVSO
P	16:22:46.6 -17:57:01		128		13.58	12.78						AAVSO
Q	16:22:45.9 -17:51:52		126		13.83	12.59						AAVSO
R	16:22:54.0 -17:45:08		115		12.70	11.51						AAVSO
S	16:23:16.1 -17:50:15	BD-17°4559	106		11.22	10.62						AAVSO
T	16:20:15.1 -17:56:30	BD-17°4543	103		10.94	10.30						AAVSO
U	16:25:28.2 -17:51:23	BD-17°4567	102		11.63	10.22						AAVSO
V	16:21:56.9 -17:30:56	BD-17°4552	99		10.67	9.93						AAVSO
W	16:24:26.0 -17:44:43	HD147778	97		10.27	9.69						AAVSO
X	16:21:04.1 -17:41:51	HD147194	93		10.10	9.27						AAVSO
Y	16:20:01.8 -17:29:41	HD147031	89		9.89	9.22						Simbad
Z	16:22:51.9 -17:09:11	HD147474	89		10.47	8.93						AAVSO
α	16:24:41.4 -17:33:39	HD147807	86		9.16	8.61						AAVSO
β	16:20:34.5 -17:04:54	HD147136	83		9.47	8.36						Simbad
γ	16:28:00.5 -17:50:41	HD148351	83		9.13	8.32						AAVSO
δ	16:16:20.4 -18:35:55	HD146312			9.07	8.28						Simbad
ε	16:20:29.4 -18:41:25	HD147102			9.07	8.81						Simbad
ζ	16:18:27.1 -17:23:15	HD146741	74		7.76	7.36						AAVSO