

ROYAL ASTRONOMICAL SOCIETY OF NEW ZEALAND.

VARIABLE STAR SECTION.

CIRCULAR No. 121.

RECURRENT NOVA O90031 T PYXIDIS.

Mr. Albert Jones has reported that at 1523 hours U.T. on December 7, 1966 he saw T Pyxidid at magnitude 12.9 visual. Mr. Jones has had this recurrent nova under observation since 1955 March 19 and has averaged an observation about every ten days since then. It has always been invisible belong magnitude 13.5 visual. The observation now reported is the first time that T Pyxidid has been visible during the period Mr. Jones has observed this star and could indicate that the star is brightening. His immediate prior observation was on November 12, 1966 when T Pyxidid was invisible.

Previous outbursts of T Pyxidid have been observed in 1890; 1902; 1920 and 1944. The Julian Dates and magnitudes at these maxima were:-

2,411, 516	Mag. 7.9
2,415, 872	7.3
2,422,421	6.6
2,4 <u>31</u> , 416	7.1

The first three maxima were discussed by H.S. Leavitt in Harvard Annals, 84, 121 (1920). A photographic sequence appeared in this publication. A photographic chart appeared in Ap. J. 88, page 228.

With this Circular a chart is published traced from a photograph obtained by Mr. Ig. Stranson in the course of his photographic work on southern variable star fields for the Chart Series of this Section. The scale of the chart is 60"=1mm. The magnitudes indicated are SP_v, suitable for visual observations, and have been taken from Annals of the Cape Observatory Vol. XVII (1954). A small finder chart showing the relation of the field to Epsilon Pyxidid is also shown, taken from the Russian Variable Star Atlas.

In the lower left hand corner an enlarged chart on the scale of 20"=1mm illustrates the immediate surrounds of T Pyxidid. The lettered stars, taken from the list in H.A. 84 are:-

	Sequence No.	12 DM 6868	09h 00.0m S	1900 31° 55'	1900 31 55	Ptg. 11.15
"a"	12	DM 6868	09h 00.0m S	1900 31° 55'	1900 31 55	Ptg. 11.15
"b"	16	09 00.2	31 55	12.47	
"c"	17	09 00.4	31 59	12.70	
"d"	18	09 00.3	31 56	13.15	
"e"	19	09 00.4	31 59	13.5	
"f"	20	09 00.5	31 58	13.7	

A more detailed chart for fainter limits will be issued later. This Circular and its accompanying chart is rushed out so that every attention can be given to this star.

1966 December 8

F.M. BATESON.
DIRECTOR.

P.O. Box 33, LAKE TEKAPO.
NEW ZEALAND.

090031 T PYXIDIS

(1900): 09^h 00^m 32^s S. 31° 58'.7

(1950) 09 02 36 S. 32° 10'.5

RECURRENT NOVA

SPEC: PEC.

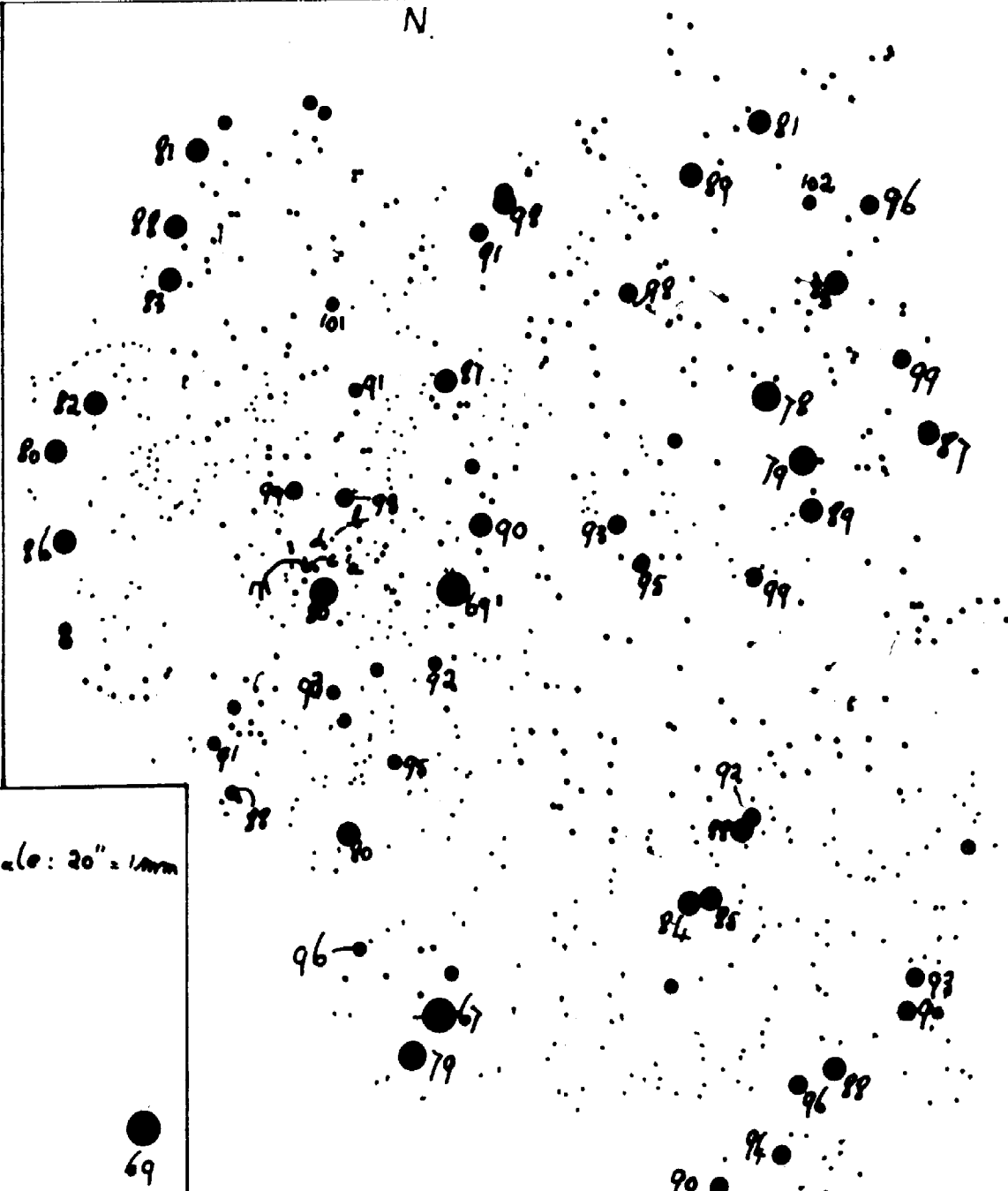
Scale: 60" = 1mm

FINDER CHART



FROM RUSSIAN
U.S. ATLAS
(1900)

N



● 93

N

Scale: 20" = 1mm

fid. a
-c
-e

● 69

PHOTO BY IS. TRACED BY F.M.B. 1966 DEC 8

FINDER CHART: ATLAS AUSTRALIS V

MAGS SP_v